

SPECIFICATION OF FP SERIES

APPLICATIONS

The split ferrites are used for EMI suppression on flat cable assemblies.

- * Internal floppy disk and hard disk ribbon cables
- * Internal ribbon cables between circuit boards and data connectors.
- * Internal ribbon cables with 8,16,32 or 64 bit digital signal busses.



ORDERING CODE

N7B FP 63.5 x 6.35 x 28.5

(1) (2) (3) (4) (5)

- (1) MATERIAL
- (2) PRODUCT CODE
- (3) A DIM.
- (4) B DIM.
- (5) C DIM.

SHAPE

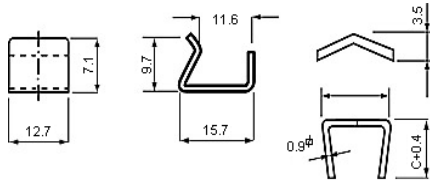


FIG. Metal Clip

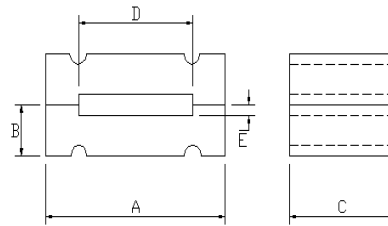


FIG 1

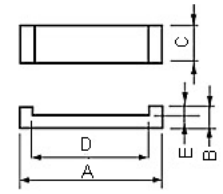


FIG 2

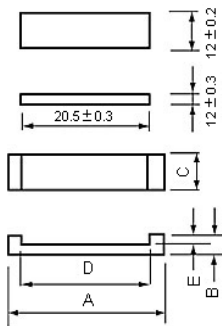


FIG 3

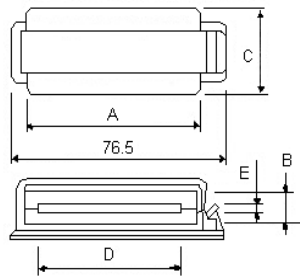


FIG 4

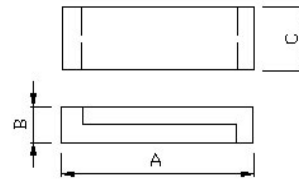


FIG 5

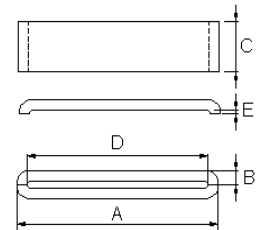


FIG 6

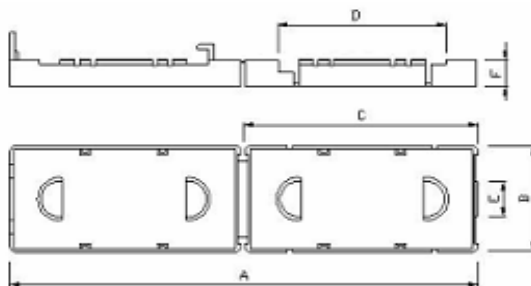


FIG 7

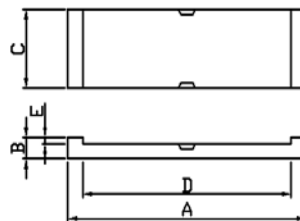


FIG 8

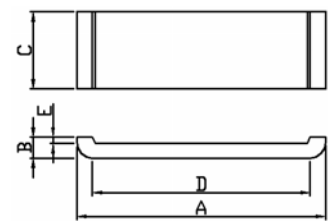


FIG 9

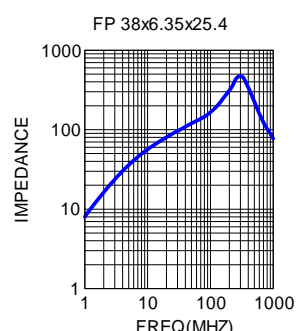
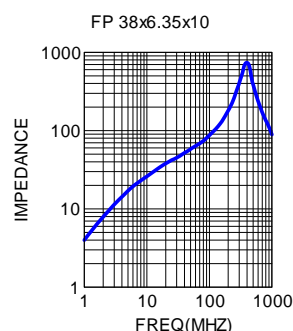
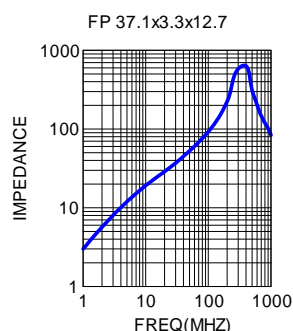
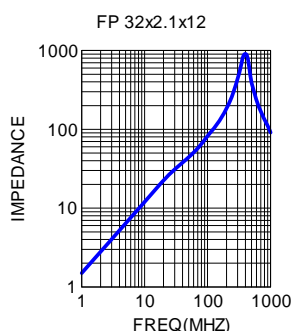
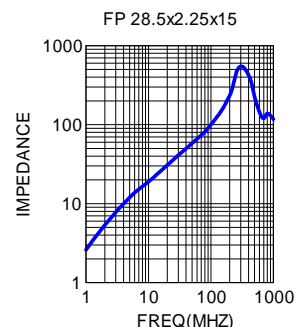
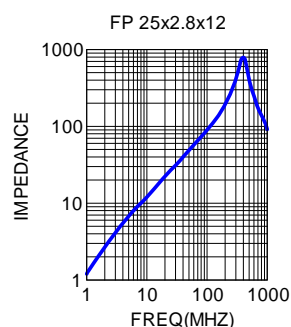
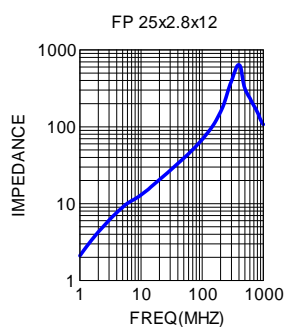
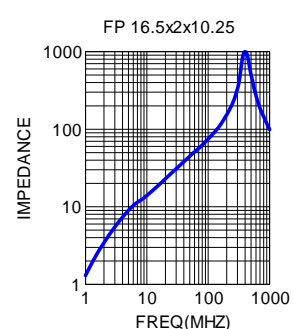
DIMENSIONS & CHARACTERISTICS

UNIT:mm

NO.	ORDERING CODE	A	B	C	D	E	Fig
1	FP 16.5x2x10.25	16.50±0.30	2.00±0.20	10.25±0.40	12.50±0.30	0.60±0.20	2
2	FP 25x2.8x12	25.00(+0.50/-0.30)	2.80(+0.00/-0.40)	12.00±0.30	21.00(+0.50/-0.20)	1.10±0.30	2
3	FPC 25x2.8x12	25.00(+0.50/-0.30)	2.80(+0.00/-0.40)	12.00±0.30	21.00(+0.50/-0.20)	1.10±0.30	3

SPECIFICATION OF FP SERIES

NO.	ORDERING CODE	A	B	C	D	E	Fig
4	FP 28.5x2.25x15	28.50±1.00	2.25±0.20	15.00±0.50	23.50±0.70	0.42±0.10	6
5	FP 32x2.1x12	32.00±1.00	2.10±0.20	12.00±0.50	27.00±0.70	0.40±0.20	2
6	FP 37.1x3.3x12.7	37.10±1.00	3.30±0.20	12.70±0.50	32.00±0.70	0.90±0.20	2
7	FP 38x6.35x10	38.00±1.00	6.35±0.25	10.00±0.40	26.60±0.70	0.80±0.20	1
8	FP 38x6.35x25.4	38.00±1.00	6.35±0.25	25.40±0.70	26.60±0.70	0.80±0.20	1
9	FP 40x2x12	40.00±1.00	2.00±0.20	12.00±0.60	35.00±1.00	0.50(+0.40/-0.30)	6
10	FPC 40x2.7x12	40.00±1.00	2.70±0.20	12.00±0.50	-	-	5
11	FP 40x3.25x12	40.00±1.00	3.25±0.25	12.00±0.50	35.00±0.70	0.55±0.20	9
12	FP 40x3.3x12	40.00±1.00	3.30±0.25	12.00±0.50	34.80±0.50	0.60±0.40	8
13	FP 42x4x22	92.20±1.00	24.50±1.00	45.60±1.00	36.00±1.00	10.00±1.00	7
14	FP 42x4x22	92.20±1.00	24.50±1.00	45.60±1.00	36.00±1.00	10.00±1.00	7
15	FP 45x6.35x10	45.00±1.00	6.35±0.25	10.00±0.40	34.40±0.70	0.80±0.20	1
16	FP 45x6.35x28.5	45.00±1.00	6.35±0.25	28.50±0.70	34.40±0.70	0.80±0.20	1
17	FP 49.6x3.25x5	49.60±1.00	3.25±0.25	5.00±0.30	44.00±0.80	0.55±0.20	6
18	FP 49.6x3.25x12	49.60±1.00	3.25±0.25	12.00±0.50	44.00±0.80	0.55±0.20	6
19	FP 55.1x6.35x10	55.10±1.20	6.35±0.25	10.00±0.40	43.70±1.00	0.80±0.20	1
20	FP 55.1x6.35x28.5	55.10±1.20	6.35±0.25	28.50±0.70	43.70±1.00	0.80±0.20	1
21	FPC 60x2.7x12	60.00±1.20	2.70±0.20	12.00±0.50	-	-	5
22	FP 63.5x6.35x13	63.50±1.20	6.35±0.25	13.00±0.40	52.00±1.00	1.10±0.30	1
23	FP 63.5x6.35x15	63.50±1.20	6.35±0.25	15.00±0.40	52.00±1.00	0.80±0.20	1
24	FP 63.5x6.35x28.5	63.50±1.20	6.35±0.25	28.50±0.70	52.00±1.00	0.80±0.20	1
25	FP 63.5x6.35x28.5	63.50±1.20	12.70±0.50	28.50±0.70	52.00±1.00	1.60±0.40	4
26	FP 76.2x6.35x28.5	76.20±1.50	6.35±0.25	28.50±0.80	65.30±1.30	0.85±0.20	1



SPECIFICATION OF FP SERIES

