

SPECIFICATION OF RC SERIES

APPLICATIONS

Enclosures for channel-type EMI suppressor snapes.

- * Internal and external power cables
- * Internal cables between PC boards and data connectors

ORDERING CODE

N7B RC 16 x 13 x 8 - MB
 (1) (2) (3) (4) (5) (6)

- (1) MATERIAL
- (2) PRODUCT CODE
- (3) CORE OD
- (4) CORE LENGTH
- (5) CORE ID
- (6) PLASTIC CLAMPS



SHAPE

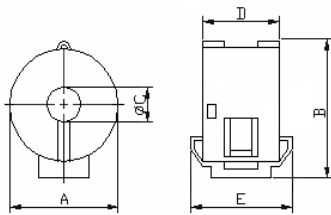


FIG 1

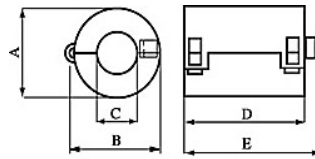


FIG 2

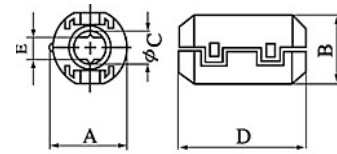


FIG 3

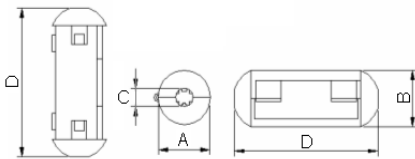


FIG 4

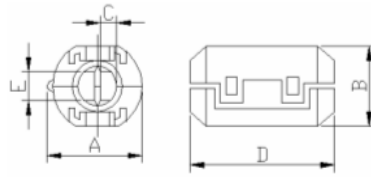


FIG 5

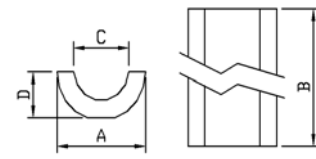


FIG 6

DIMENSIONS & CHARACTERISTICS

UNIT:mm

NO.	ORDERING CODE	A	B	C	D	E	Applicable cable(max)	Fig
1	RC 10x20x5 MB	13.00±1.00	12.00±1.00	5.00±1.00	25.50±1.00	2.40±0.50	3.5	3
2	RC 12x15x7 MB	14.00±1.00	15.50±1.00	7.00±1.00	18.00±1.00	22.00±1.00	7	2
3	RC 13x23x7 MB	17.00±1.00	15.00±1.00	7.00±1.00	30.00±1.00	3.00±1.00	4	3
4	RC 14x28.5x7 MB	20.00±1.00	20.00±1.00	8.50±1.00	39.00±1.00	-	7	4
5	RC 16x13x8 MB	19.50±1.00	23.00±1.00	8.00±1.00	17.00±1.00	23.00±1.00	8	1
6	RC 16x16x8 MB	19.20±1.00	23.40±1.00	8.20±1.00	20.00±1.00	26.10±1.00	8	1
7	RC 16x28x8 MB	19.50±1.00	20.00±1.00	9.50±1.00	31.00±1.00	35.00±1.00	8	2
8	RC 16x28x9 MB	19.50±1.00	20.00±1.00	9.50±1.00	31.00±1.00	35.00±1.00	9	2
9	RC 16x28x9 MB	20.00±1.00	18.00±1.00	9.50±1.00	36.00±1.00	6.50±1.00	9	3
10	RC 17x28x11 MB	20.50±1.00	20.50±1.00	11.00±1.00	31.50±1.00	36.00±1.00	11	2
11	RC 20x30x5 MB	23.00±1.00	22.00±1.00	5.00±1.00	36.00±1.00	10.00±1.00	4*1.5	5
12	RC 20x30x13 MB	23.00±1.00	22.00±1.00	13.50±1.00	36.00±1.00	10.00±1.00	12	3
13	RC 20.5x10x10.2 MB	24.50±1.00	28.50±1.00	10.20±1.00	13.50±1.00	20.00±1.00	10	1
14	RC 24x14x11.5 MB	28.00±1.00	31.50±1.00	11.50±1.00	18.00±1.00	24.00±1.00	11.5	1
15	RC 25x12x15 MB	29.00±1.00	33.00±1.00	15.00±1.00	15.50±1.00	21.50±1.00	15	1
16	RC 26x30x13 MB	30.75±1.00	31.00±1.00	13.00±1.00	34.00±1.00	39.00±1.00	13	2

SPECIFICATION OF RC SERIES

